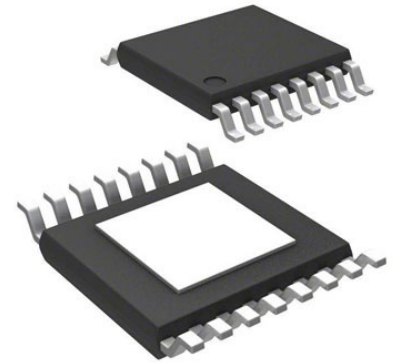


Linear Technology, LT3430EFE#PBF Step-Down Switching Regulator 6.5A Adjustable 16-Pin, TSSOP



Images are for reference only

Manufacturers	<a href="#">Analog Devices, Inc</a>
Package/Case	HTSSOP-16
Product Type	Power Management ICs
RoHS	Pb-free Halide free
Lifecycle	

Please submit RFQ for LT3430EFE#PBF or [Email to us: sales@ovaga.com](mailto:sales@ovaga.com) We will contact you in 12 hours.

[RFQ](#)

## General Description

The LT3430/LT3430-1 are monolithic buck switching regulators that accept input voltages up to 60V. A high efficiency 3A, 0.1Ω switch is included on the die along with all the necessary oscillator, control and logic circuitry. A current mode architecture provides fast transient response and excellent loop stability.

Special design techniques and a new high voltage process achieve high efficiency over a wide input range. Efficiency is maintained over a wide output current range by using the output to bias the circuitry and by utilizing a supply boost capacitor to saturate the power switch. Patented circuitry\* maintains peak switch current over the full duty cycle range. A shutdown pin reduces supply current to 30μA and a SYNC pin can be externally synchronized with a logic level input from 228kHz to 700kHz for the LT3430 or from 125kHz to 250kHz for the LT3430-1.

The LT3430/LT3430-1 are available in a thermally enhanced 16-pin TSSOP package.

## Features

Wide Input Range: 5.5V to 60V

3A Peak Switch Current over All Duty Cycles

Constant Switching Frequency:

200kHz (LT3430)

100kHz (LT3430-1)

0.1Ω Switch Resistance

Current Mode

Effective Supply Current: 2.5mA

Shutdown Current: 30μA

1.2V Feedback Reference Voltage

Easily Synchronizable

Cycle-by-Cycle Current Limiting

Small, 16-Pin Thermally Enhanced TSSOP Package

## Application

Industrial and Automotive Power Supplies

Portable Computers

Battery Chargers

Distributed Power Systems

## Related Products



### [LT3763EFE](#)

Analog Devices, Inc  
TSSOP28



### [LTC4417IUF](#)

Analog Devices, Inc  
QFN-24



### [LTC1966CMS8#PBF](#)

Analog Devices, Inc  
MSOP-8P



### [LTM8045EY#PBF](#)

Analog Devices, Inc  
BGA40



### [LT1038CK](#)

Analog Devices, Inc  
TO-3



### [LTC3440EMS](#)

Analog Devices, Inc  
MSOP10



### [LTC2990IMS#PBF](#)

Analog Devices, Inc  
10MSOP



### [LT4295IUFD#PBF](#)

Analog Devices, Inc  
28-WFQFN