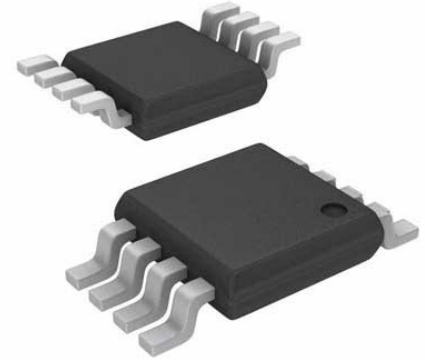


Conv DC-DC 2.7V to 17V Synchronous Step Down Single-Out 0.6V to 17V 1A
Automotive 8-Pin MSOP EP Tube



Images are for reference only

Manufacturers	Analog Devices, Inc
Package/Case	MSOP8
Product Type	Power Management ICs
RoHS	
Lifecycle	

Please submit RFQ for LTC3621IMS8E#PBF or [Email to us: sales@ovaga.com](mailto:sales@ovaga.com) We will contact you in 12 hours.

[RFQ](#)

General Description

The LTC3621/LTC3621-2 is a high efficiency 17V, 1A synchronous monolithic step-down regulator. The switching frequency is fixed to 1MHz or 2.25MHz with a $\pm 40\%$ synchronizing range. The regulator features ultralow quiescent current and high efficiencies over a wide VOUT range.

The step-down regulator operates from an input voltage range of 2.7V to 17V and provides an adjustable output range from 0.6V to VIN while delivering up to 1A of output current. A user-selectable mode input is provided to allow the user to trade off ripple noise for light load efficiency; Burst Mode operation provides the highest efficiency at light loads, while pulse-skipping mode provides the lowest voltage ripple. The MODE pin can also be used to allow the user to sync the switching frequency to an external clock.

LTC3621 Options Part Name Frequency VOUT LTC3621-1 1.00MHz Adjustable LTC3621-3 3.1.00MHz 3.3V LTC3621-5 1.00MHz 5V LTC3621-22 2.25MHz Adjustable LTC3621-23 3.2.25MHz 3.3V LTC3621-25 2.25MHz 5V

Features

Wide VIN Range: 2.7V to 17V

Wide VOUT Range: 0.6V to VIN

95% Max Efficiency

Low IQ < 3.5 μ A, Zero-Current Shutdown

Constant Frequency (1MHz/2.25MHz)

Full Dropout Operation with Low IQ

1A Rated Output Current

Current Mode Operation for Excellent Line and Load Transient Response

Synchronizable to External Clock

Pulse-Skipping, Forced Continuous, Burst Mode® Operation

Internal Compensation and Soft-Start

Overtemperature Protection

Compact 6-Lead DFN (2mm \times 3mm) Package or Thermally-Enhanced MS8E Package with Power Good Output and Independent SGND Pin

Application

Portable-Handheld Scanners

Industrial and Embedded Computing

Automotive Applications

Emergency Radio

Related Products



[LT3763EFE](#)

Analog Devices, Inc
TSSOP28



[LTC4417IUF](#)

Analog Devices, Inc
QFN-24



[LTC1966CMS8#PBF](#)

Analog Devices, Inc
MSOP-8P



[LTM8045EX#PBF](#)

Analog Devices, Inc
BGA40



[LT1038CK](#)

Analog Devices, Inc
TO-3



[LTC3440EMS](#)

Analog Devices, Inc
MSOP10



[LTC2990IMS#PBF](#)

Analog Devices, Inc
10MSOP



[LT4295IUF#PBF](#)

Analog Devices, Inc
28-WFQFN