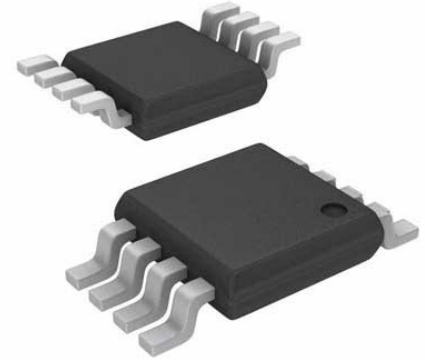


Processor Supervisor 3.086V/2.338V/Adj 3 Active Low/Open Drain Automotive 8-Pin MSOP Tube



Images are for reference only

Manufacturers	<a href="#">Analog Devices, Inc</a>
Package/Case	MSOP8
Product Type	Supervisors
RoHS	Pb-free Halide free
Lifecycle	

Please submit RFQ for LTC1727EMS8-5#PBF or [Email to us: sales@ovaga.com](mailto:sales@ovaga.com) We will contact you in 12 hours.

[RFQ](#)

## General Description

The LTC1727 is a triple supply monitor intended for systems with multiple supply voltages. Each supply monitor has its own open-drain output for individual supply monitoring. A common open-drain reset output remains low until all three supplies have been in compliance for 200ms. Tight 1.5% accuracy specifications and glitch immunity ensure reliable reset operation without false triggering.

The LTC1728 is functionally identical to the LTC1727 without the individual monitor outputs.

The RST output is guaranteed to be in the correct state for  $V_{CC5}/V_{CC25}/V_{CC18}$  or  $V_{CC3}$  down to 1V. The LTC1727/LTC1728 may also be configured to monitor any one or two  $V_{CC}$  inputs instead of three, depending on system requirements.

Very low (10 $\mu$ A typical) supply current makes the LTC1727/LTC1728 ideal for power conscious systems.

The LTC1727 is available in an 8-lead MSOP or SO package and the LTC1728 is available in a 5-lead SOT-23 package.

Applications

## Features

Monitors Three Inputs Simultaneously

LTC1727-5: 5V, 3.3V and ADJ

LTC1727-2.5: 2.5V, 3.3V and ADJ

LTC1728-5: 5V, 3.3V and ADJ

LTC1728-2.5: 2.5V, 3.3V and ADJ

LTC1728-1.8: 3V, 1.8V and ADJ

LTC1728-3.3: 3.3V, 1.8V and ADJ

Very Low Supply Current: 10 $\mu$ A Typ

LTC1727-5: 5V, 3.3V and ADJ

LTC1727-2.5: 2.5V, 3.3V and ADJ

LTC1728-5: 5V, 3.3V and ADJ

LTC1728-2.5: 2.5V, 3.3V and ADJ

LTC1728-1.8: 3V, 1.8V and ADJ

LTC1728-3.3: 3.3V, 1.8V and ADJ

200ms Reset Time Delay

Active Low RESET Output

Power Supply Glitch Immunity

Guaranteed

RESET

CC3

CC5

CC25

CC18

LTC1727 Includes Monitor Output for Each Supply

LTC1727: 8-Lead MSOP and SO Packages

LTC1728: 5-Lead SOT-23 Package

## Application

Desktop Computers

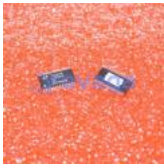
Notebook Computers

Intelligent Instruments

Portable Battery-Powered Equipment

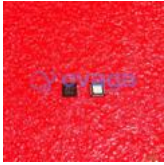
Network Servers

## Related Products



### [LT3763EFE](#)

Analog Devices, Inc  
TSSOP28



### [LTC4417IUF](#)

Analog Devices, Inc  
QFN-24



### [LTC1966CMS8#PBF](#)

Analog Devices, Inc  
MSOP-8P



### [LTM8045EX#PBF](#)

Analog Devices, Inc  
BGA40



### [LT1038CK](#)

Analog Devices, Inc  
TO-3



### [LTC3440EMS](#)

Analog Devices, Inc  
MSOP10



### [LTC2990IMS#PBF](#)

Analog Devices, Inc  
10MSOP



### [LT4295IUFD#PBF](#)

Analog Devices, Inc  
28-WFQFN