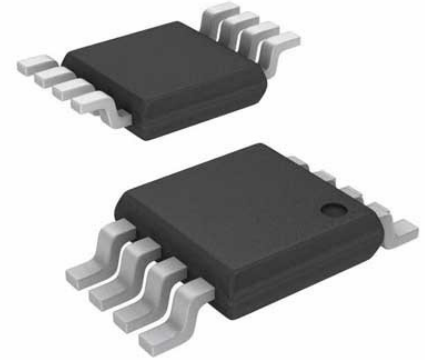


Analogue Comparator, Voltage Reference, Nanopower, 1 Comparator, 60  $\mu$ s, 2V to 11V, MSOP, 8 Pins



Images are for reference only

Manufacturers	<a href="#">Analog Devices, Inc</a>
Package/Case	MSOP8
Product Type	Comparator ICs
RoHS	Pb-free Halide free
Lifecycle	

Please submit RFQ for LTC1540IMS8#PBF or [Email to us: sales@ovaga.com](mailto:sales@ovaga.com) We will contact you in 12 hours.

[RFQ](#)

## General Description

The LTC1540 is an ultralow power, single comparator with built-in reference. The comparator's features include less than 0.6 $\mu$ A supply current over the commercial temperature range, a 1.182V  $\pm$ 2% reference, programmable hysteresis and TTL/CMOS outputs that sink and source current. The reference output can drive a bypass capacitor of up to 0.01 $\mu$ F without oscillation.

The comparator operates from a single 2V to 11V supply or a dual  $\pm$ 1V to  $\pm$ 5.5V supply. Comparator hysteresis is easily programmed by using two resistors and the HYST pin. Each comparator's input operates from the negative supply to within 1.3V of the positive supply. The comparator output stage can continuously source up to 40mA. By eliminating the cross-conducting current that normally occur when the comparator changes logic states, power supply glitches are eliminated.

The LTC1540 is available in the 8-pin MSOP and SO packages. For space limited applications, the LTC1540 is available in a 3mm  $\times$  3mm low profile (0.8mm) dual fine-pitch leadless package (DFN).

## Features

Ultralow Quiescent Current: 0.3 $\mu$ A Typ

Reference Output Drives 0.01 $\mu$ F Capacitor

Adjustable Hysteresis

Available in 3mm  $\times$  3mm  $\times$  0.8mm DFN Package

Wide Supply Range: 2V to 11V

Input Voltage Range Includes the Negative Supply

Reference Output Sources Up to 1mA

TTL/CMOS Compatible Outputs

60 $\mu$ s Propagation Delay with 10mV Overdrive

No Crowbar Current

40mA Continuous Source Current

Pin Compatible with LTC1440, MAX921, MAX931

## Application

Battery-Powered System Monitoring

Threshold Detectors

Window Comparators

Oscillator Circuits

## Related Products



### [LTC1042CN8](#)

Analog Devices, Inc  
DIP8



### [LT1017IS8#PBF](#)

Analog Devices, Inc  
SOP8



### [LT1720CS8](#)

Analog Devices, Inc  
SOP8



### [LTC1540CMS8](#)

Analog Devices, Inc  
MSOP8



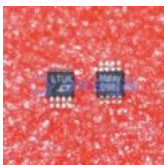
### [LT1719CS8](#)

Analog Devices, Inc  
SOP8



### [LT1018CS8](#)

Analog Devices, Inc  
SOP8



### [LT1713IMS8](#)

Analog Devices, Inc  
MSOP-8



### [LTC1540CS8](#)

Analog Devices, Inc  
SOIC8