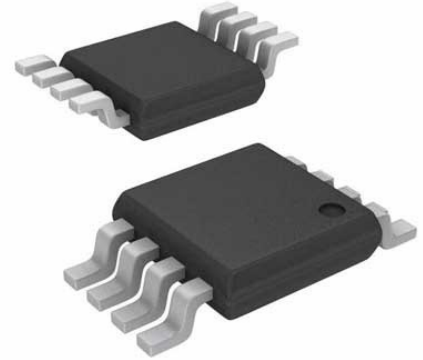


Low Power, Fully Differential Input/Output Amplifier/Driver Family; Package: MSOP; No of Pins: 8; Temperature Range: -40°C to +85°C



Images are for reference only

Manufacturers	Analog Devices, Inc
Package/Case	MSOP8
Product Type	Amplifier ICs
RoHS	Pb-free Halide free
Lifecycle	

Please submit RFQ for LTC1992-1IMS8#PBF or [Email to us: sales@ovaga.com](mailto:sales@ovaga.com) We will contact you in 12 hours.

[RFQ](#)

General Description

The LTC1992 product family consists of five fully differential, low power amplifiers. The LTC1992 is an unconstrained fully differential amplifier. The LTC1992-1, LTC1992-2, LTC1992-5 and LTC1992-10 are fixed gain blocks (with gains of 1, 2, 5 and 10 respectively) featuring precision on-chip resistors for accurate and ultrastable gain. All of the LTC1992 parts have a separate internal common mode feedback path for outstanding output phase balancing and reduced second order harmonics. The VOCM pin sets the output common mode level independent of the input common mode level. This feature makes level shifting of signals easy.

The amplifiers' differential inputs operate with signals ranging from rail-to-rail with a common mode level from the negative supply up to 1.3V from the positive supply. The differential input DC offset is typically 250µV. The rail-to-rail outputs sink and source 10mA. The LTC1992 is stable for all capacitive loads up to 10,000pF.

The LTC1992 can be used in single supply applications with supply voltages as low as 2.7V. It can also be used with dual supplies up to ±5V. The LTC1992 is available in an 8-pin MSOP package.

Features

Available with Adjustable Gain or Fixed Gain of 2, 5 or 10

3.5ppm/°C Gain Temperature Coefficient

5ppm Gain Long Term Stability

Fully Differential Input and Output

CLOAD Stable up to 10,000pF

Adjustable Output Common Mode Voltage

Rail-to-Rail Output Swing

Low Supply Current: 1mA (Max)

High Output Current: 10mA (Min)

Specified on a Single 2.7V to ±5V Supply

DC Offset Voltage <2.5mV (Max)

Available in 8-Lead MSOP Package

Application

Differential Driver/Receiver

Differential Amplification

Single-Ended to Differential Conversion

Level Shifting

Trimmed Phase Response for Multichannel Systems

Related Products



[LTC1151CSW#PBF](#)

Analog Devices, Inc
SOIC-16



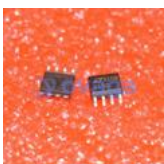
[LTC2053CMS8](#)

Analog Devices, Inc
MSOP8



[LT1491ACS](#)

Analog Devices, Inc
SOP14



[LTC1150CS8](#)

Analog Devices, Inc
SOP8



[LT1498CS8](#)

Analog Devices, Inc
SOP-8



[LTC1150CN8](#)

Analog Devices, Inc
DIP8



[LT6105IMS8](#)

Analog Devices, Inc
MSOP-8



[LT1013CN8](#)

Analog Devices, Inc
DIP-8