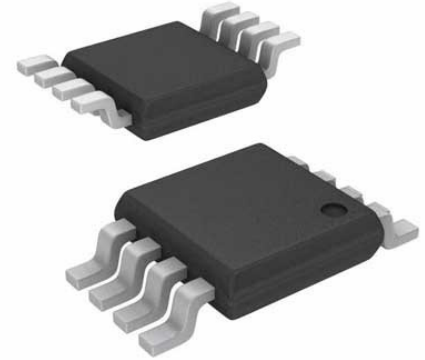


LINEAR TECHNOLOGY LTC6362HMS8#PBF Differential Amplifier, Low Power, 1 Amplifiers, 200 μ V, 34MHz, -40°C, 125°C

Manufacturers	Analog Devices, Inc
Package/Case	MSOP8
Product Type	Amplifier ICs
RoHS	Pb-free Halide free
Lifecycle	



Images are for reference only

Please submit RFQ for LTC6362HMS8#PBF or [Email to us: sales@ovaga.com](mailto:sales@ovaga.com) We will contact you in 12 hours.

[RFQ](#)

General Description

The LTC6362 is a low power, low noise differential op amp with rail-to-rail input and output swing that has been optimized to drive low power SAR ADCs. The LTC6362 draws only 1mA of supply current in active operation, and features a shutdown mode in which the current consumption is reduced to 70 μ A.

The amplifier may be configured to convert a single-ended input signal to a differential output signal, and is capable of being operated in an inverting or noninverting configuration.

Low offset voltage, low input bias current, and a stable high impedance configuration make this amplifier suitable for use not only as an ADC driver but also earlier in the signal chain, to convert a precision sensor signal to a balanced (differential) signal for processing in noisy industrial environments.

The LTC6362 is available in an 8-lead MSOP package and also in a compact 3mm \times 3mm 8-pin leadless DFN package, and operates with guaranteed specifications over a -40°C to 125°C temperature range.

Features

1mA Supply Current

Single 2.8V to 5.25V supply

Fully Differential Input and Output

200 μ V Max Offset Voltage

260nA Max Input Bias Current

Fast Settling: 550ns to 18-Bit, 8VP-P Output

Low Distortion: -116dBc at 1kHz, 8VP-P

Rail-to-Rail Inputs and Outputs

3.9nV/ $\sqrt{\text{Hz}}$ Input-Referred Noise

180MHz Gain-Bandwidth Product

34MHz -3dB Bandwidth

Low Power Shutdown: 70 μ A

8-Lead MSOP and 3mm \times 3mm 8-Lead DFN Packages

Application

16-Bit and 18-Bit SAR ADC Drivers

Single-Ended-to-Differential Conversion

Low Power Pipeline ADC Driver

Differential Line Drivers

Battery-Powered Instrumentation

Related Products



[LTC1151CSW#PBF](#)

Analog Devices, Inc
SOIC-16



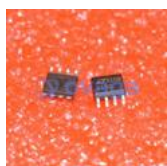
[LTC2053CMS8](#)

Analog Devices, Inc
MSOP8



[LT1491ACS](#)

Analog Devices, Inc
SOP14



[LTC1150CS8](#)

Analog Devices, Inc
SOP8



[LT1498CS8](#)

Analog Devices, Inc
SOP-8



[LTC1150CN8](#)

Analog Devices, Inc
DIP8



[LT6105IMS8](#)

Analog Devices, Inc
MSOP-8



[LT1013CN8](#)

Analog Devices, Inc
DIP-8