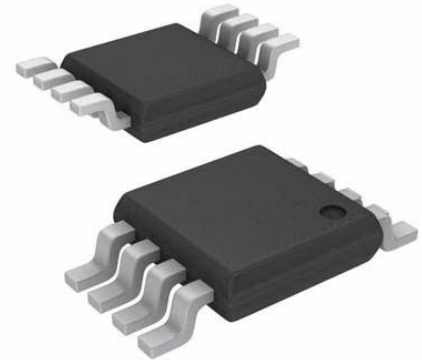


Transceiver RS422/RS485, 20 Mbps, 3V-3.6V supply, MSOP-8

Manufacturers	<a href="#">Analog Devices, Inc</a>
Package/Case	MSOP8
Product Type	Interface ICs
RoHS	Pb-free Halide free
Lifecycle	



Images are for reference only

Please submit RFQ for LTC2851IMS8#PBF or [Email to us: sales@ovaga.com](mailto:sales@ovaga.com) We will contact you in 12 hours.

[RFQ](#)

## General Description

The LTC2850, LTC2851 and LTC2852 are low power, 20Mbps RS485/RS422 transceivers operating on 3.3V supplies. The receiver has a one-eighth unit load supporting up to 256 nodes per bus (C, I-grade), and a failsafe feature that guarantees a high output state under conditions of floating or shorted inputs.

The driver maintains a high output impedance over the entire common mode range when disabled or when the supply is removed. Excessive power dissipation caused by bus contention or a fault is prevented by current limiting all outputs and by thermal shutdown.

Enhanced ESD protection allows these parts to withstand up to  $\pm 15\text{kV}$  (human body model) on the transceiver interface pins without latchup or damage.

## Features

3.3V Supply Voltage

20Mbps Maximum Data Rate

No Damage or Latchup Up to  $\pm 15\text{kV}$  HBM

High Input Impedance Supports 256 Nodes (C, I-Grade)

Operation Up to  $125^{\circ}\text{C}$  (H-Grade)

Guaranteed Failsafe Receiver Operation Over the Entire Common Mode Range

Current Limited Drivers and Thermal Shutdown

Delayed Micropower Shutdown:  $5\mu\text{A}$  Maximum (C, I-Grade)

Power Up/Down Glitch-Free Driver Outputs

Low Operating Current:  $370\mu\text{A}$  Typical in Receive Mode

Compatible with TIA/EIA-485-A Specifications

Available in 8-Pin and 10-Pin  $3\text{mm} \times 3\text{mm}$  DFN, 8-Pin and 10-Pin MSOP, and 8-Pin and 14-Pin SO Packages

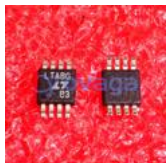
## Application

Low Power RS485/RS422  
Transceiver

Level Translator

Backplane Transceiver

## Related Products



[LTC4300A-1IMS8#PBF](#)

Analog Devices, Inc  
MSOP8



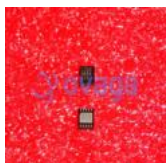
[LTC2870IFE#PBF](#)

Analog Devices, Inc  
TSSOP28



[LTC6820HMS#PBF](#)

Analog Devices, Inc  
MSOP-16



[LTC2854HDD#PBF](#)

Analog Devices, Inc  
QFN-10



[LTC2870IUFD#PBF](#)

Analog Devices, Inc  
28-QFN



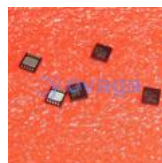
[LTC6820IMS#PBF](#)

Analog Devices, Inc  
MSOP16



[LTM2881IV-3#PBF](#)

Analog Devices, Inc  
LGA32



[LTC2852IDD#PBF](#)

Analog Devices, Inc  
DFN10