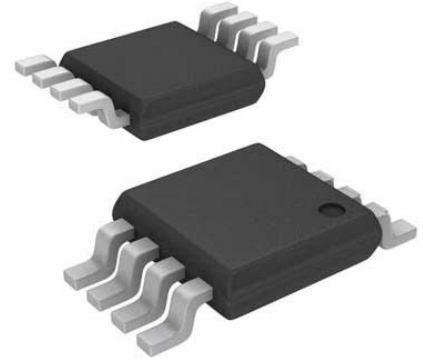


LINEAR TECHNOLOGY LTC2055IMS8#PBF Operational Amplifier, Dual, 2 Amplifier, 500kHz, 0.5V/ μ s, 2.7V to 6V, MSOP, 8Pins



Images are for reference only

Manufacturers	Analog Devices, Inc
Package/Case	MSOP8
Product Type	Amplifier ICs
RoHS	Pb-free Halide free
Lifecycle	

Please submit RFQ for LTC2055IMS8#PBF or [Email to us: sales@ovaga.com](mailto:sales@ovaga.com) We will contact you in 12 hours.

[RFQ](#)

General Description

The LTC2054/LTC2055 are low power, low noise, single/dual, zero-drift operational amplifiers with an extended temperature version (LTC2054MP) that has guaranteed specifications from -55°C to 150°C . They are available in SOT-23 (ThinSOT™) and MS8 packages. For space limited applications, the LTC2055 is also available in a $3\text{mm} \times 3\text{mm} \times 0.8\text{mm}$ dual fine pitch leadless package (DFN). They operate from a single 2.7V minimum supply and support $\pm 5\text{V}$ applications. The current consumption is typically $150\mu\text{A}$ for the LTC2054 and $130\mu\text{A}/\text{amp}$ for the LTC2055.

The LTC2054/LTC2055, despite their miniature size, feature uncompromising DC performance. The maximum input offset voltage and offset drift are $3.0\mu\text{V}$ and $30\text{nV}/^{\circ}\text{C}$ over the -40°C to 85°C industrial temperature range. The almost zero DC offset and drift are supported with a power supply rejection ratio (PSRR) and common mode rejection ratio (CMRR) of 130dB (typ).

The input common mode voltage ranges from the negative supply up to typically 0.5V below the positive supply. The open-loop gain is typically 140dB. The LTC2054/LTC2055 also feature a $1.6\mu\text{V}/\text{P}$ DC to 10Hz noise and a 500kHz gain-bandwidth product.

Features

Supply Current 150 μ A (Max per Amplifier) Guaranteed from -40°C to 85°C

Offset Voltage 3 μ V (Max, -40°C to 85°C)

Offset Voltage Drift 30nV/ $^{\circ}\text{C}$ (Max, -40°C to 85°C)

Common Mode Input Range from V_{-} to $V_{+} - 0.5\text{V}$

Output Swings Rail-to-Rail

Voltage Gain: 140dB (Typ)

PSRR and CMRR: 130dB (Typ)

Input Bias Current: 1pA (Typ, 25°C)

Noise: 1.6 μ V_{P-P} (0.01Hz to 10Hz Typ)

Supply Operation:

2.7V to 6V (LTC2054/LTC2055)

2.7V to $\pm 5.5\text{V}$ (LTC2054HV/LTC2055HV)

Low Profile (1mm) SOT-23, MS8 and $3\text{mm} \times 3\text{mm} \times 0.8\text{mm}$ DFN Packages

Application

Thermocouple Amplifiers

Electronic Scales

Medical Instrumentation

Strain Gauge Amplifiers

High Resolution Data Acquisition

DC Accurate RC Active Filters

Low Side Current Sense

Battery-Powered Systems

Related Products



[LTC1151CSW#PBF](#)

Analog Devices, Inc
SOIC-16



[LT1498CS8](#)

Analog Devices, Inc
SOP-8



[LTC2053CMS8](#)

Analog Devices, Inc
MSOP8



[LTC1150CN8](#)

Analog Devices, Inc
DIP8



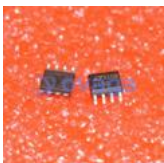
[LT1491ACS](#)

Analog Devices, Inc
SOP14



[LT6105IMS8](#)

Analog Devices, Inc
MSOP-8



[LTC1150CS8](#)

Analog Devices, Inc
SOP8



[LT1013CN8](#)

Analog Devices, Inc
DIP-8