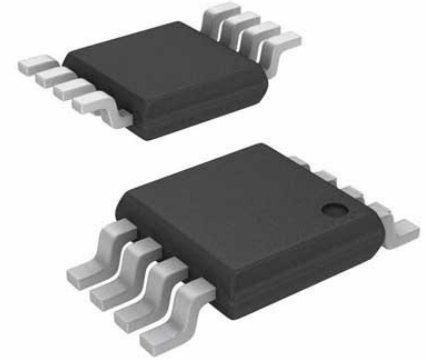


Conv DC-DC 3.6V to 25V Step Down Dual-Out 1.25V to 22V 1.4A 16-Pin TSSOP EP Tube



Images are for reference only

Manufacturers	<a href="#">Analog Devices, Inc</a>
Package/Case	MSOP8
Product Type	Power Management ICs
RoHS	Pb-free Halide free
Lifecycle	

Please submit RFQ for LT1940EFE#PBF or [Email to us: sales@ovaga.com](mailto:sales@ovaga.com) We will contact you in 12 hours.

[RFQ](#)

## General Description

The LT1940 is a dual current mode PWM step-down DC/DC converter with internal 2A power switches. Both converters are synchronized to a single 1.1MHz oscillator and run with opposite phases, reducing input ripple current. The output voltages are set with external resistor dividers, and each regulator has independent shutdown and soft-start circuits. Each regulator generates a power-good signal when its output is in regulation, easing power supply sequencing and interfacing with microcontrollers and DSPs.

The LT1940's 1.1MHz switching frequency allows the use of tiny inductors and capacitors, resulting in a very small dual 1.4A output solution. Constant frequency and ceramic capacitors combine to produce low, predictable output ripple voltage. With its wide input range of 3.6V to 25V, the LT1940 regulates a wide variety of power sources, from 4-cell batteries and 5V logic rails to unregulated wall transformers, lead acid batteries and distributed-power supplies. The LT1940L is intended to operate from regulated 5V supplies. A current mode PWM architecture provides fast transient response with simple compensation components and cycle-by-cycle current limiting. Frequency foldback and thermal shutdown provide additional protection.

## Features

Wide Input Voltage Range:

LT1940: 3.6V to 25V

LT1940L: 3.6V to 7V

Two 1.4A Output Switching Regulators with Internal Power Switches

Constant 1.1MHz Switching Frequency

Anti-Phase Switching Reduces Ripple

Independent Shutdown/Soft-Start Pins

Independent Power Good Indicators Ease Supply Sequencing

Uses Small Inductors and Ceramic Capacitors

Small 16-Lead Thermally Enhanced TSSOP Surface Mount Package

## Application

Disk Drives

DSP Power Supplies

Wall Transformer Regulation

Distributed Power Regulation

DSL Modems

Cable Modems

## Related Products



### [LT3763EFE](#)

Analog Devices, Inc  
TSSOP28



### [LTC4417IUF](#)

Analog Devices, Inc  
QFN-24



### [LTC1966CMS8#PBF](#)

Analog Devices, Inc  
MSOP-8P



### [LTM8045EY#PBF](#)

Analog Devices, Inc  
BGA40



### [LT1038CK](#)

Analog Devices, Inc  
TO-3



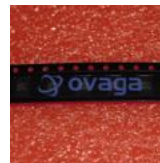
### [LTC3440EMS](#)

Analog Devices, Inc  
MSOP10



### [LTC2990IMS#PBF](#)

Analog Devices, Inc  
10MSOP



### [LT4295IUFD#PBF](#)

Analog Devices, Inc  
28-WFQFN