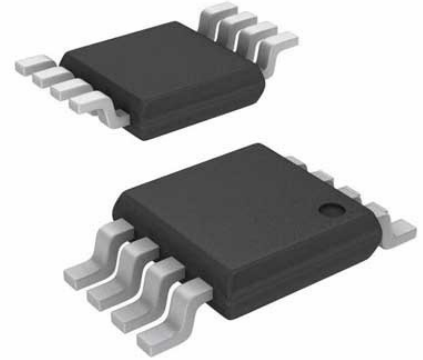


SN74CBTD3306PWR FET Bus Switch with Level Shifting, 2Channel, 2Input, 2Bit, 64mA, 250 $\mu$ s, 4.5V to 5.5V, TSSOP-8



Images are for reference only

Manufacturers	<a href="#">Analog Devices, Inc</a>
Package/Case	MSOP8
Product Type	Amplifier ICs
RoHS	Green
Lifecycle	

Please submit RFQ for LT6016MPMS8#PBF or [Email to us: sales@ovaga.com](mailto:sales@ovaga.com) We will contact you in 12 hours.

[RFQ](#)

## General Description

The LT6015/LT6016/LT6017 are single/dual/quad rail-to-rail input operational amplifiers with input offset voltage trimmed to less than 50 $\mu$ V. These amplifiers operate on single and split supplies with a total voltage of 3V to 50V and draw only 315 $\mu$ A per amplifier. They are reverse battery protected, drawing very little current for reverse supplies up to 50V.

The Over-The-Top<sup>®</sup> input stage of the LT6015/LT6016/ LT6017 is designed to provide added protection in tough environments. The input common mode range extends from V<sub>-</sub> to V<sub>+</sub> and beyond: these amplifiers operate with inputs up to 76V above V<sub>-</sub> independent of V<sub>+</sub>. Internal resistors protect the inputs against transient faults up to 25V below the negative supply. The LT6015/LT6016/ LT6017 can drive loads up to 25mA and are unity-gain stable with capacitive loads as large as 200pF. Optional external compensation can be added to extend the capacitive drive capability beyond 200pF.

The LT6015 is offered in a 5-lead SOT package. The LT6016 dual op amp is available in an 8-lead MSOP package. The LT6017 is offered in a 22-pin leadless DFN package.

## Features

Input Common Mode Range:  $V_-$  to  $V_- + 76V$

Rail-to-Rail Input and Output

Low Power: 315 $\mu$ A/Amplifier

Operating Temperature Range:  $-55^{\circ}C$  to  $150^{\circ}C$

VOS:  $\pm 50\mu V$  (Maximum)

CMRR, PSRR: 126dB

Reverse Battery Protection to 50V

Gain Bandwidth Product: 3.2MHz

Specified on 5V and  $\pm 15V$  Supplies

High Voltage Gain: 1000V/mV

No Phase Reversal

No Supply Sequencing Problems

Single 5-Lead SOT-23 (ThinSOT™) Package

Dual 8-Lead MSOP

Quad 22-Lead DFN (6mm  $\times$  3mm)

## Application

High Side or Low Side Current Sensing

Battery/Power Supply Monitoring

4mA to 20mA Transmitters

High Voltage Data Acquisition

Battery/Portable Instrumentation

## Related Products



### [LTC1151CSW#PBF](#)

Analog Devices, Inc  
SOIC-16



### [LT1498CS8](#)

Analog Devices, Inc  
SOP-8



### [LTC2053CMS8](#)

Analog Devices, Inc  
MSOP8



### [LTC1150CN8](#)

Analog Devices, Inc  
DIP8



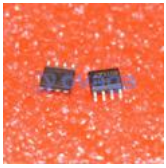
### [LT1491ACS](#)

Analog Devices, Inc  
SOP14



### [LT6105IMS8](#)

Analog Devices, Inc  
MSOP-8



[LTC1150CS8](#)

Analog Devices, Inc  
SOP8



[LT1013CN8](#)

Analog Devices, Inc  
DIP-8