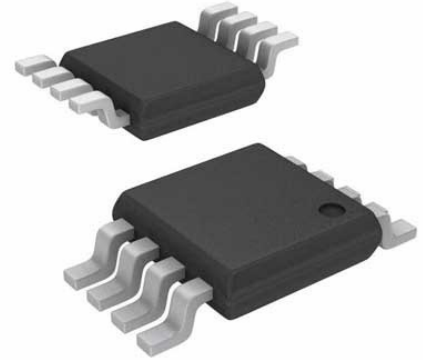


1.4A, 500kHz Step-Down Switching Regulator; Package: MSOP; No of Pins: 8;
Temperature Range: -40°C to +85°C

| | |
|---------------|-------------------------------------|
| Manufacturers | Analog Devices, Inc |
| Package/Case | MSOP8 |
| Product Type | Power Management ICs |
| RoHS | Pb-free Halide free |
| Lifecycle | |



Images are for reference only

Please submit RFQ for LT1936IMS8E#PBF or [Email to us: sales@ovaga.com](mailto:sales@ovaga.com) We will contact you in 12 hours.

[RFQ](#)

General Description

The LT1936 is a current mode PWM step-down DC/DC converter with an internal 1.9A power switch, packaged in a tiny, thermally enhanced 8-lead MSOP. The wide input range of 3.6V to 36V makes the LT1936 suitable for regulating power from a wide variety of sources, including automotive batteries, 24V industrial supplies and unregulated wall adapters. Its high operating frequency allows the use of small, low cost inductors and ceramic capacitors, resulting in low, predictable output ripple.

Cycle-by-cycle current limit, frequency foldback and thermal shutdown provide protection against shorted outputs, and soft-start eliminates input current surge during startup. Transient response can be optimized by using external compensation components, or board space can be minimized by using internal compensation. The low current (<2 μ A) shutdown mode enables easy power management in battery-powered systems.

Features

Wide Input Range: 3.6V to 36V

Short-Circuit Protected Over Full Input Range

1.9A Guaranteed Minimum Switch Current

5V at 1.4A from 10V to 36V Input

3.3V at 1.4A from 7V to 36V Input

5V at 1.2A from 6.3V to 36V Input

3.3V at 1.2A from 4.5V to 36V Input

Output Adjustable Down to 1.20V

500kHz Fixed Frequency Operation

Soft-Start

Uses Small Ceramic Capacitors

Internal or External Compensation

Low Shutdown Current: <2 μ A

Thermally Enhanced 8-Lead MSOP Package

Application

Automotive Battery Regulation

Industrial Control Supplies

Unregulated Wall Adapters

Related Products



[LT3763EFE](#)

Analog Devices, Inc
TSSOP28



[LTC4417IUF](#)

Analog Devices, Inc
QFN-24



[LTC1966CMS8#PBF](#)

Analog Devices, Inc
MSOP-8P



[LTM8045EY#PBF](#)

Analog Devices, Inc
BGA40



[LT1038CK](#)

Analog Devices, Inc
TO-3



[LTC3440EMS](#)

Analog Devices, Inc
MSOP10



[LTC2990IMS#PBF](#)

Analog Devices, Inc
10MSOP



[LT4295IUFD#PBF](#)

Analog Devices, Inc
28-WFQFN