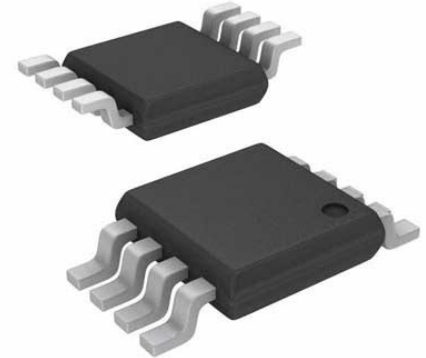


Processor Supervisor 3.085V/4.675V/Adj 3 Active Low/Open Drain Automotive 8-Pin MSOP Tube



Images are for reference only

|               |                                     |
|---------------|-------------------------------------|
| Manufacturers | <a href="#">Analog Devices, Inc</a> |
| Package/Case  | MSOP8                               |
| Product Type  | Supervisors                         |
| RoHS          | Pb-free Halide free                 |
| Lifecycle     |                                     |

Please submit RFQ for LTC1726EMS8-5#PBF or [Email to us: sales@ovaga.com](mailto:sales@ovaga.com) We will contact you in 12 hours.

[RFQ](#)

## General Description

The LTC1726 is a triple supply monitor and microprocessor supervisory circuit with adjustable reset and watchdog functions intended for systems with multiple supply voltages. The part has a common open-drain reset output with an adjustable delay. The reset and watchdog time-out periods are both adjustable using external capacitors.

Tight 1.5% accuracy specifications and glitch immunity ensure reliable reset operation without false triggering.

The RST output is guaranteed to be in the correct state for  $V_{CC5}/V_{CC25}$  or  $V_{CC3}$  down to 1V. The LTC1726 may also be configured to monitor any one or two  $V_{CC}$  inputs instead of three, depending on system requirements.

The low (16 $\mu$ A typical) supply current makes the LTC1726 ideal for power-conscious systems.

## Features

Monitors Three Inputs Simultaneously

LTC1726-5: 5V, 3.3V and ADJ

LTC1726-2.5: 2.5V, 3.3V and ADJ

Low Supply Current: 16 $\mu$ A Typ

Adjustable Reset Timeout

Adjustable Watchdog Timeout

Active Low Open-Drain Reset Output

Power Supply Glitch Immunity

Guaranteed

RESET

CC3

CC25

CC5

MS8 and SO-8 Packages

LTC1726-5: 5V, 3.3V and ADJ

LTC1726-2.5: 2.5V, 3.3V and ADJ

## Application

Desktop Computers

Notebook Computers

Intelligent Instruments

Portable Battery-Powered Equipment

Network Servers

## Related Products



### [LT3763EFE](#)

Analog Devices, Inc  
TSSOP28



### [LTC4417IUF](#)

Analog Devices, Inc  
QFN-24



### [LTC1966CMS8#PBF](#)

Analog Devices, Inc  
MSOP-8P



### [LT1038CK](#)

Analog Devices, Inc  
TO-3



### [LTC3440EMS](#)

Analog Devices, Inc  
MSOP10



### [LTC2990IMS#PBF](#)

Analog Devices, Inc  
10MSOP



[LTM8045EY#PBF](#)

Analog Devices, Inc

BGA40



[LT4295IUFD#PBF](#)

Analog Devices, Inc

28-WFQFN