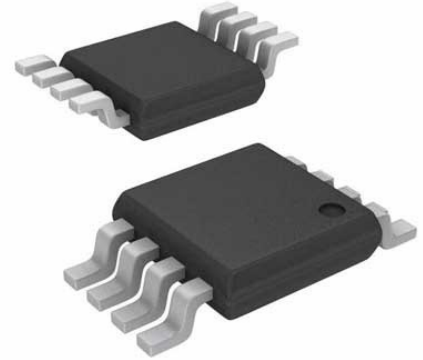


Precision, Gain Selectable High Side Current Sense Amplifier; Package: MSOP; No of Pins: 8; Temperature Range: -40°C to +85°C



Images are for reference only

Manufacturers	<a href="#">Analog Devices, Inc</a>
Package/Case	MSOP8
Product Type	Amplifier ICs
RoHS	Green
Lifecycle	

Please submit RFQ for LT6100IMS8#TRPBF or [Email to us: sales@ovaga.com](mailto:sales@ovaga.com) We will contact you in 12 hours.

[RFQ](#)

## General Description

The LT6100 is a complete micropower, precision, high side current sense amplifier. The LT6100 monitors unidirectional currents via the voltage across an external sense resistor. Fixed gains of 10, 12.5, 20, 25, 40, 50V/V are obtained by simply strapping or floating two gain select pins. Gain accuracy is better than 0.5% for all gains.

The LT6100 sense inputs have a voltage range that extends from 4.1V to 48V, and can withstand a differential voltage of the full supply. This makes it possible to monitor the voltage across a MOSFET switch or a fuse. The part can also withstand a reverse battery condition on the inputs.

Input offset is a low 300 $\mu$ V. CMRR and PSRR are in excess of 105dB, resulting in a wide dynamic range. A filter pin is provided to easily implement signal filtering with a single capacitor.

The LT6100 has a separate supply input, which operates from 2.7V to 36V and draws only 60 $\mu$ A. When VCC is powered down, the sense pins are biased off. This prevents loading of the monitored circuit, irrespective of the sense voltage. The LT6100 is available in an 8-lead DFN and MSOP package.

## Features

Input Offset Voltage: 300 $\mu$ V (Max)

Sense Inputs Up to 48V

0.5% Gain Accuracy

Pin Selectable Gain: 10, 12.5, 20, 25, 40, 50V/V

Separate Power Supply: 2.7V to 36V

Operating Current: 60 $\mu$ A

Sense Input Current (VCC Powered Down): 1nA

Reverse Battery Protected to -48V

Buffered Output

Noise Filtering Input

Available in 8-Lead DFN and MSOP Packages

## Application

Battery Monitoring

Fuse Monitoring

Portable and Cellular Phones

Portable Test/Measurement Systems

## Related Products



### [LTC1151CSW#PBF](#)

Analog Devices, Inc  
SOIC-16



### [LT1498CS8](#)

Analog Devices, Inc  
SOP-8



### [LTC2053CMS8](#)

Analog Devices, Inc  
MSOP8



### [LTC1150CN8](#)

Analog Devices, Inc  
DIP8



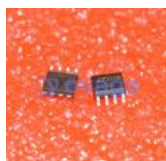
### [LT1491ACS](#)

Analog Devices, Inc  
SOP14



### [LT6105IMS8](#)

Analog Devices, Inc  
MSOP-8



### [LTC1150CS8](#)

Analog Devices, Inc  
SOP8



### [LT1013CN8](#)

Analog Devices, Inc  
DIP-8