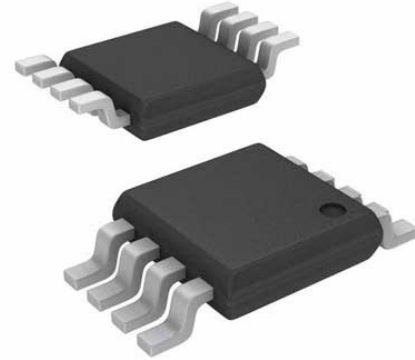


Ic opamp vid dual 100mhz 8-msop

Manufacturers	<a href="#">Analog Devices, Inc</a>
Package/Case	MSOP8
Product Type	Amplifier ICs
RoHS	Pb-free Halide free
Lifecycle	



Images are for reference only

Please submit RFQ for LT6206IMS8#PBF or [Email to us: sales@ovaga.com](mailto:sales@ovaga.com) We will contact you in 12 hours.

[RFQ](#)

## General Description

The LT6205/LT6206/LT6207 are low cost single/dual/quad voltage feedback amplifiers that feature 100MHz gain-bandwidth product, 450V/ $\mu$ s slew rate and 50mA output current. These amplifiers have an input range that includes ground and an output that swings within 60mV of either supply rail, making them well suited for single supply operation.

These amplifiers maintain their performance for supplies from 2.7V to 12.6V and are specified at 3V, 5V and  $\pm$ 5V. The inputs can be driven beyond the supplies without damage or phase reversal of the output. Isolation between channels is high, over 90dB at 10MHz.

The LT6205 is available in the 5-pin SOT-23, and the LT6206 is available in an 8-lead MSOP package with standard op amp pinouts. For compact layouts the quad LT6207 is available in the 16-pin SSOP package. These devices are specified over the commercial, industrial and automotive temperature ranges.

## Features

450V/ $\mu$ s Slew Rate

100MHz Gain Bandwidth Product

Wide Supply Range 2.7V to 12.6V

Output Swings Rail-to-Rail

Input Common Mode Range Includes Ground

High Output Drive: 50mA

Channel Separation: 90dB at 10MHz

Specified on 3V, 5V and  $\pm$ 5V Supplies

Input Offset Voltage: 1mV

Low Power Dissipation: 20mW per Amplifier on Single 5V

Operating Temperature Range:  $-40^{\circ}\text{C}$  to  $125^{\circ}\text{C}$

Low Profile (1mm) SOT-23 (ThinSOT™) Package

## Application

Video Line Driver

Automotive Displays

RGB Amplifiers

Coaxial Cable Drivers

Low Voltage High Speed Signal Processing

## Related Products



### [LTC1151CSW#PBF](#)

Analog Devices, Inc  
SOIC-16



### [LT1498CS8](#)

Analog Devices, Inc  
SOP-8



### [LTC2053CMS8](#)

Analog Devices, Inc  
MSOP8



### [LTC1150CN8](#)

Analog Devices, Inc  
DIP8



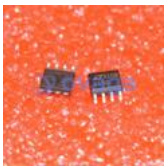
### [LT1491ACS](#)

Analog Devices, Inc  
SOP14



### [LT6105IMS8](#)

Analog Devices, Inc  
MSOP-8



### [LTC1150CS8](#)

Analog Devices, Inc  
SOP8



### [LT1013CN8](#)

Analog Devices, Inc  
DIP-8