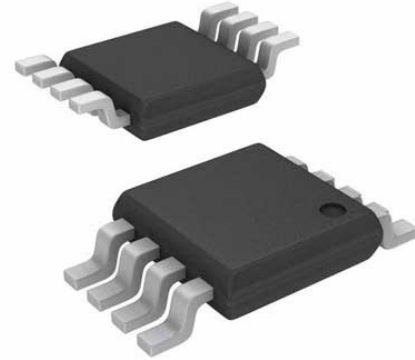


IC COMP R-R IN/OUT SINGLE 8-MSOP

Manufacturers	<a href="#">Analog Devices, Inc</a>
Package/Case	MSOP8
Product Type	Comparator ICs
RoHS	Pb-free Halide free
Lifecycle	



Images are for reference only

Please submit RFQ for LT1713IMS8#PBF or [Email to us: sales@ovaga.com](mailto:sales@ovaga.com) We will contact you in 12 hours.

[RFQ](#)

## General Description

The LT1713/LT1714 are UltraFast™ 7ns, single/dual comparators featuring rail-to-rail inputs, rail-to-rail complementary outputs and an output latch. Optimized for 3V and 5V power supplies, they operate over a single supply voltage range from 2.4V to 12V or from ±2.4V to ±6V dual supplies.

The LT1713/LT1714 are designed for ease of use in a variety of systems. In addition to wide supply voltage flexibility, rail-to-rail input common mode range extends 100mV beyond both supply rails and the outputs are protected against phase reversal for inputs extending further beyond the rails. Also, the rail-to-rail inputs may be taken to opposite rails with no significant increase in input current. The rail-to-rail matched complementary outputs interface directly to TTL or CMOS logic and can sink 10mA to within 0.5V of GND or source 10mA to within 0.7V of V+.

The LT1713/LT1714 have internal TTL/CMOS compatible latches for retaining data at the outputs. Each latch holds data as long as its latch pin is held high. Latch pin hysteresis provides protection against slow moving or noisy latch signals. The LT1713 is available in the 8-lead MSOP package. The LT1714 is available in the 16-lead narrow SSOP package.

## Features

Ultrafast:

7ns at 20mV Overdrive

8.5ns at 5mV Overdrive

Rail-to-Rail Inputs

Rail-to-Rail Complementary Outputs (TTL/CMOS Compatible)

Specified at 2.7V, 5V and  $\pm 5V$  Supplies

Low Power (Per Comparator): 5mA

Output Latch

Inputs Can Exceed Supplies Without Phase Reversal

LT1713: 8-Lead MSOP Package

LT1714: 16-Lead Narrow SSOP Package

## Application

High Speed Automatic Test Equipment

Current Sense for Switching Regulators

Crystal Oscillator Circuits

High Speed Sampling Circuits

High Speed A/D Converters

Pulse Width Modulators

Window Comparators

Extended Range V/F Converters

Fast Pulse Height/Width Discriminators

Line Receivers

High Speed Triggers

## Related Products



### [LT1042CN8](#)

Analog Devices, Inc  
DIP8



### [LT1017IS8#PBF](#)

Analog Devices, Inc  
SOP8



### [LT1720CS8](#)

Analog Devices, Inc  
SOP8



### [LT1540CMS8](#)

Analog Devices, Inc  
MSOP8



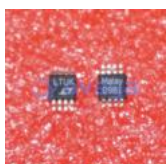
### [LT1719CS8](#)

Analog Devices, Inc  
SOP8



### [LT1018CS8](#)

Analog Devices, Inc  
SOP8



### [LT1713IMS8](#)

Analog Devices, Inc  
MSOP-8



### [LT1540CS8](#)

Analog Devices, Inc  
SOIC8